



Yuen Long Public Middle School Alumni Association
Tang Ying Yip Primary School

Supports for Non-Chinese Speaking Students



WELCOME TO OUR SCHOOL!



Objectives:

1. Help our new P1 parents to know more about our school services for NCS students
2. Communicate with our parents



CONTENTS

◆ (I) Learning Supports:

- 1) School-based Chinese Curriculum of NCS Students
- 2) After-school Chinese Language Learning and Homework Guidance Class

◆ (II) Communication Supports:

- 1) Parent-Teacher Meetings
- 2) School Notices Translation
- 3) WhatsApp Messaging

◆ (III) Cultural Integration Supports:

- 1) Christmas Party
- 2) Chinese Culture Day
- 3) JOCKEY CLUB New Arts Power - Cantonese Opera meets K-Pop

◆ (IV) Other Learning Experiences:

- 1) Cantonese Story Telling Competition
- 2) Hong Kong Schools Speech Festival
- 3) Chinese Writing and Talent Competition for Non-Chinese Speaking Students (EDB)
- 4) 2020-2021 NCS Students Chinese Calligraphy Competition

◆ (V) Students' Sharing

◆ (VI) Points-to-note:

- 1) eClass App
- 2) Home-Returning Method
- 3) Tips for Parents

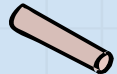


(I) LEARNING SUPPORTS



1. School-based Chinese Curriculum of NCS Students

- School-based curriculum:
 - matched with the levels of NCS students
 - adapted textbook content & learning materials
 - TWO formative assessments, ONE examination
 - P1 students will be promoted directly to P2 without ranking.
- Through school-based curriculum, we hope to help to...
 - build up a foundation of Chinese knowledge e.g. *stroke order, usage of words & vocabulary*
 - enhance ability of speaking and listening (daily Chinese phrases)
 - bridge the learning gap of Chinese between kindergarten and Primary One



(I) LEARNING SUPPORTS

1. School-based Chinese Curriculum of NCS Students

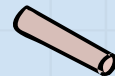
- Additional Chinese teachers and Teaching Assistant:
 - ✓ Chinese teaching & after-school Chinese learning supports
- Pullout groups:
 - separate NCS students from their classes on Chinese lessons regarding their grades and levels this school year
- Lesson arrangement:
 - receive tutorials by Chinese teachers (✓ listening, speaking, reading and writing)
→ enhance student's ability in understanding the learning content of Chinese language for a good learning foundation

- ✓ Assist students to have a better Learning in **Reading, Writing, Listening** and **Speaking** of Chinese 😊
- ✓ Assist students to adapt to **local curriculum** of Chinese language and join **mainstream** classes 😊

(I) LEARNING SUPPORTS

1. School-based Chinese Curriculum of NCS Students

Pullout Groups



(I) LEARNING SUPPORTS

1. School-based Chinese Curriculum of NCS Students

- **Adapted learning and teaching materials:**

Adapted Textbook of P1-P3



Adapted Textbook of P4-P6

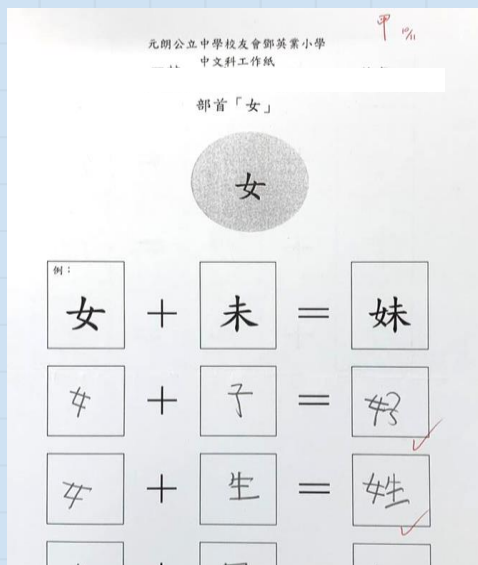


- ✓ Enhance students' ability of **Reading, Writing, Listening** and **Speaking** of Chinese 😊
- ✓ Build a **firm foundation** of knowledge and skills of Chinese Language 😊

(I) LEARNING SUPPORTS

1. School-based Chinese Curriculum of NCS Students

Adapted Worksheets

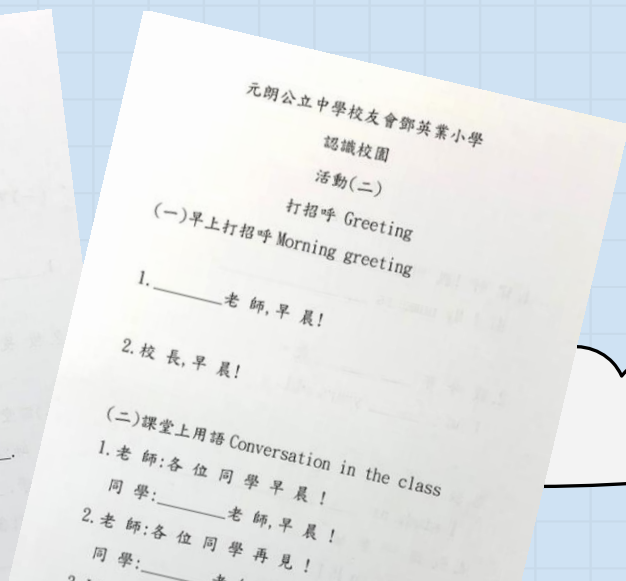
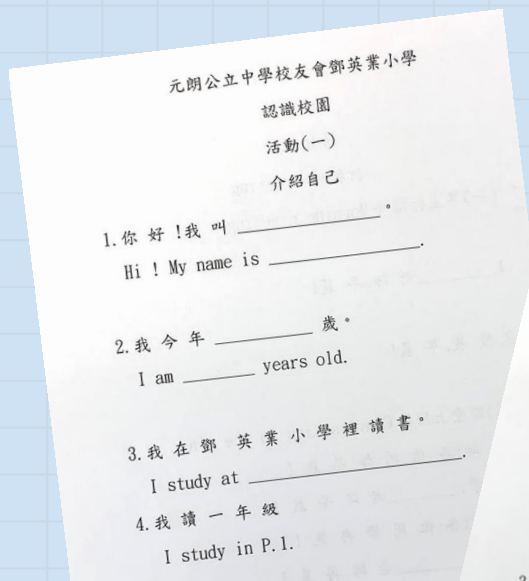
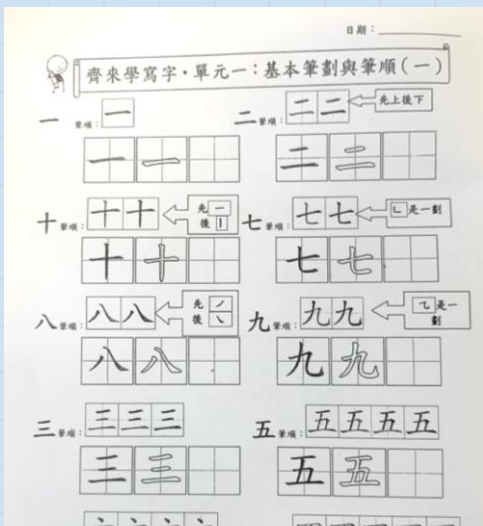


✓ **Consolidate** a concrete knowledge foundation of Chinese 😊

(I) LEARNING SUPPORTS

1. School-based Chinese Curriculum of NCS Students

Adapted Exercises



✓ **Consolidate** a concrete knowledge foundation of Chinese 😊

✓ **Enhance** Writing and Speaking skills 😊

(I) LEARNING SUPPORTS

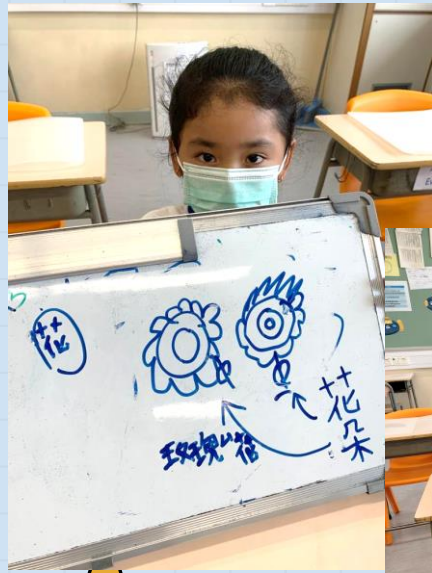
2. After-school Chinese Language Learning and Homework Guidance Class

- **Duration:** 1 hour
- **Content:**
 - (a) Finish homework/exercise of Chinese under teacher's guidance
 - (b) Acquire & consolidate Chinese knowledge
e.g. stroke order, usage of words & vocabulary
 - (c) Learn Chinese culture by activities e.g. watching videos



(I) LEARNING SUPPORTS

2. After-school Chinese Language Learning and Homework Guidance Class



- ✓ **Build** and **consolidate** a concrete knowledge foundation of Chinese 😊
- ✓ Learn **Chinese** Traditional **Culture** 😊

(II) COMMUNICATION SUPPORTS

1. Parent-Teacher Meetings (Parent's Day)

- TWO meetings in a school year, one for EACH term
- ✓ Interpretation service (in English)
- ✓ Feedback & suggestions regarding of learning performance
- Express opinions to teachers
 - Any learning difficulties
 - Communicate with Chinese teacher for improvements

- ✓ **Facilitate communication** between parents and teachers 😊
- ✓ Better understand the **learning progress** of students 😊

(II) COMMUNICATION SUPPORTS

2. School Notices Translation

- ✓ English version
- Important notices/ information will be translated
e.g. *Class resumption, Examination, Post-examination arrangements, Home-returning Methods, Secondary School Places Allocation, etc.*
- For those notices didn't mentioned above, the class teacher will help to inform parents.
- Check on school website/ WhatsApp

✓ **Foster parents' understanding** of the latest and important information from school 😊

(II) COMMUNICATION SUPPORTS

Translated Notices



Y.L.PUB MID SCH A A TANG YING YIP PRI SCH [Class Arrangement after Easter Holidays] and [Schedule of P1-P4 Formative Assessment Days]

Circular no. 2021174
30 March, 2021

Dear Parents,

According to the Education Bureau's announcement on 26 March (Friday), schools can arrange students from any individual level with the upper population capped at the two-third of the school's total number of students, up to a maximum of four levels, to have face-to-face classes at school after Easter holidays. Hence, some adjustments are made to the original arrangements of the school and the released notice (2021146) on 9 March has been replaced by this notice. The details are as follows:

a. [Arrangements on Face-to-Face Classes after the Easter Holidays and P1-P4 Formative Assessment]

Week	Date	Returning Time / Leaving Time	Class Levels of Having Face-to-Face Class	Class Levels of Having Online Class	Remark
11 to 13	9 Apr (Fri) to 20 Apr (Tue)	08:10-13:00	P1-P4	P5, P6	P5 and P6 students should follow the special arrangement timetable for Chin English, Mathematics General Studies le: during these three the report time of online classroom is while the end time is: The special timetable (if assessment timetables be released again intranet email a Parent App. P1-P4 Chines
13	21 Apr (Wed) to	08:45-11:20	P1-P4 Formative Assessment	P5, P6	



Y.L.PUB MID SCH A A TANG YING YIP PRI SCH [Whole-School Resumption of Half-Day Face-to-Face Classes]

Circular no. 2021208
28 April, 2021

Dear Parents,

The Education Bureau announced on 29 March (Monday) that if an individual school that can arrange for all its teachers and staff to take regular virus tests, the EDB will, taking into account the school's actual situation, consider allowing the school to arrange whole-school resumption of half-day face-to-face classes. Our school has always attached importance to the learning needs and effectiveness of each student. With the support and cooperation of our teachers and staff, we have taken the first virus test in order to be well-prepared for the whole-school resumption of half-day face-to-face classes. After meeting the application requirements and received the approval from Incorporated Management Committee, starting from 3 May 2021 (Monday), our school will resume half-day face-to-face class for all levels in accordance with regulations of the letter issued by the EDB on 29 March 2021. The following is the arrangement:

Week and Date	Lesson Time	P1	P2	P3	P4	P5	P6
Week 15, Starting from 3 May (Monday), until further notice*	08:10 to 13:00	Follow "School Timetable" for half-day face-to-face class. School open time: 7:45 am Classroom arrival time: 8:10 am Leave time: 1:00 pm					

*Starting from 3 May (Monday), all school teachers and staff will take and complete the regular virus test once in every 14-day cycle and conduct the test on schedule. If the arrangements could not be made timely, or school will notify the EDB and parents.

[Others]

- Cross-boundary students need to use Zoom to attend lessons according to his/her class timetable synchrony with his/her class.
- Before going to school every day, parents should remind children to bring tissue and spare masks, a their children's temperature. When having a fever or other symptoms (such as malaise, dry or shortness of breath, etc), please seek medical advice promptly and refrain from attending classes: Parent should contact the school for applying sick leave for student.
- Students should breakfast at home before going to school. During recess, students will be arranged to the washroom separately. Although tuck shop service is still operating, it is suggested that students prepare their own snack. Moreover, since the use of drinking fountains will be temporary, students should bring their own bottle of water.
- When the face-to-face class resumes, if student is confirmed that undergoing any one conditions, parent should contact the school on 2617 8200 promptly for helping us to take measures and notify the EDB:
 - being a Confirmed Case / Preliminary Tested Positive of COVID-19;
 - has been classified as a "close contact" of an infected person with COVID-19 by CHP
 - undergoing COVID-19 nucleic acid testing under quarantine pursuant to the Prevent Disease (Compulsion: Testing for Certain Persons) Regulation (Cap. 599).

Please visit our school website for more 😊



Y.L.PUB MID SCH A A TANG YING YIP PRI SCH [Primary Six Graduation Ceremony and Post-Examination Arrangement]

Circular no. 2021233
1 June, 2021

Dear Parents,

Joint graduation ceremony of Yuen Long Public Middle School Alumni Association affiliated primary schools is scheduled to be held at Yuen Long Theatre on 7 June (Monday) morning. For more details, please refer to the notices [2021213] and [2021214]. In addition, all P1-P5 students will have a day off on that day. After the 3th examination, post-examination activities and awards presentation ceremony will be arranged. Hence, starting from 23 June, please refer to the following timetable for classes.

Post-Examination Arrangement:

Week	Date	Time	Activity	Remark
22	21/6 (Mon) to 22/6 (Tue)	08:10 to 13:00	Examination Paper Correction	
22 to 23	23/6 (Wed) to 30/6 (Wed)	08:10 to 12:00	"STEM" Phenomenon Based Learning Week. Having Chinese, English, Mathematics class and theme-based activity in the total of four sessions for each day.	23/6(Wed): P6 graduation camping activity. 24/6(Thu): P6 graduation trip. 25/6(Fri): Vaccination (P1, P5 female pupils and P6 female pupils).
23 to 24	2/7 (Fri) to 5/7 (Mon)	08:10 to 12:00	Chinese Culture Day	2/7(Sat): The 7th Executive Committee Election of Old Student Association. 5/7(Mon): The 10th Executive Committee Election of Parent-Teacher Association.
24	6/7(Tue)	-----	Release of Secondary School Places Allocation Results (please refer to another notice)	P1-P5 students will have a day off on this day.
24	7/7(Wed)	08:10 to 11:00	Awards Presentation Ceremony for P4-P6 Students	P1-P3 students will have a day off on this day.
24	8/7(Thu)	08:10 to		

(II) COMMUNICATION SUPPORTS

3. WhatsApp Messaging

- **Unofficial** message released channel
- ✓ WhatsApp Group
- **Main functions:**
 - ① Immediately receive translated school notices/ other important messages
 - ② Receive reminders e.g. *sign& return the notice, dates of holiday/ school day*
 - ③ Make enquiries



- ✓ **INSTANTLY** receive important notices/ information of school 😊
- ✓ **Foster communication** between parents and school 😊

(III) CULTURAL INTEGRATION SUPPORTS

1. Christmas Party

- Gather with teachers and classmates (Food sharing)
 - ✓ Build up a solid relationship
 - ✓ Enhance interaction & interpersonal skills
- Perform with classmates (Singing Contest)
 - ✓ Culturally diverse and memorable experience
 - ✓ Facilitate cooperation & interaction with classmates
 - ✓ Enhance a sense of belongings to the class/ school



- ✓ Create a more **inclusive** campus for both NCS and other students 😊
- ✓ Facilitate students' understanding on **different culture** 😊

(III) CULTURAL INTEGRATION SUPPORTS

Christmas Party

Let's take a photo
with my **FRIENDS!** 😊



(III) CULTURAL INTEGRATION SUPPORTS

Christmas Party

It's our
SHOWTIME! 😊



(III) CULTURAL INTEGRATION SUPPORTS

2. Chinese Culture Day

- Learn Chinese traditional culture by activities



Chinese Costume Dressing



Recorder Performance



Spinning Top Making

Let's **HAVE FUN**
while learning
Chinese culture! 😊



Chinese Snack Tasting e.g. Sachima

It's YUMMY! 😊



- ✓ Create a more **inclusive and interactive** environment for both NCS and other students 😊
- ✓ Provide **opportunities** for NCS students to learn Chinese culture 😊



Glutinous Rice Balls Making

(III) CULTURAL INTEGRATION SUPPORTS

3. JOCKEY CLUB New Arts Power - Cantonese Opera meets K-Pop

Content:

- A Cantonese drama with K-Pop elements
- Learn knowledge of Cantonese opera
e.g. “singing”, “acting”, “reciting” & “acrobatic fighting”
- Get a taste of opera costumes & martial arts



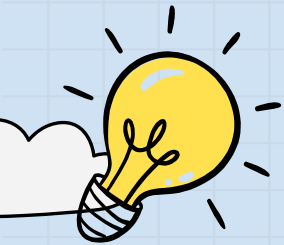
- ✓ Provide **opportunities** for NCS students to experience Cantonese opera 😊
- ✓ **Arouse** their **interest** towards Chinese culture by participating the activity 😊

(III) CULTURAL INTEGRATION SUPPORTS



It's
INTERESTING! 😊



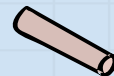


Not only provide different aspects of supports,
but also OPPORTUNITIES for other learning experiences.

↑ Self-esteem



↑ Interest in Chinese Language



(IV) OTHER LEARNING EXPERIENCES

1. Cantonese Story Telling Competition

- Show potential of talent
- Outstanding results: Champion & 1st Runner-up

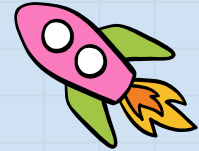


- ✓ Additional learning experience **boosts** their **self-esteem** 😊
- ✓ More **willing to learn** & **improve** towards Chinese Language 😊

(IV) OTHER LEARNING EXPERIENCES

2. Hong Kong Schools Speech Festival

- Talent: Chinese story telling
→ Accumulated experience
- Scored above 80 (Merit)

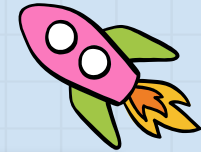


- ✓ Realize the **strengths** and **weaknesses** 😊
- ✓ Enhance **confidence** 😊
- ✓ Cultivate a **positive** attitude towards Chinese Language 😊

(IV) OTHER LEARNING EXPERIENCES

3. Chinese Writing and Talent Competition for Non-Chinese Speaking Students

- Held by Education Bureau
- Talent: Chinese Story Telling
- Result: 1st Runner-up & 2nd Runner-up



✓ Enhance **confidence** 😊

✓ More **willing** to join different kinds of competitions 😊

★ (IV) OTHER LEARNING EXPERIENCES

4. 2020-2021 NCS Students Chinese Calligraphy Competition ★



- First and new attempt on Chinese calligraphy
→willing to try & work hard

✓ Cultivate a **positive** attitude towards Chinese Language 😊





Do you want to know more about our students?



Do they like learning Chinese?

How do they think about studying Chinese in our school?

What are the differences between studying in original class and the pullout class?

Let's listen to their
SHARING! 😊



(V) STUDENTS' SHARING



(VI) POINTS-TO-NOTE

1. eClass APP (Parent)

- One of the main communication channels
- Receive instant messages and information from school
e.g. class resumption, examination arrangements, etc.
- Sign e-notices
- Check homework of today



Remember to check the messages everyday! 😊

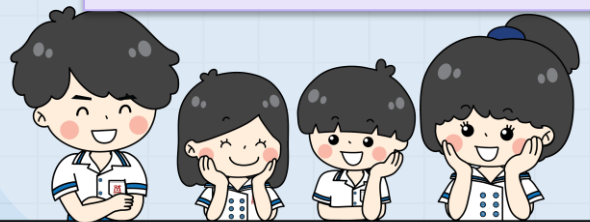
E-CLASS



Install 「eClass」 App



Enter **school name**,
Login name and
Password
(will receive at the
end of August)

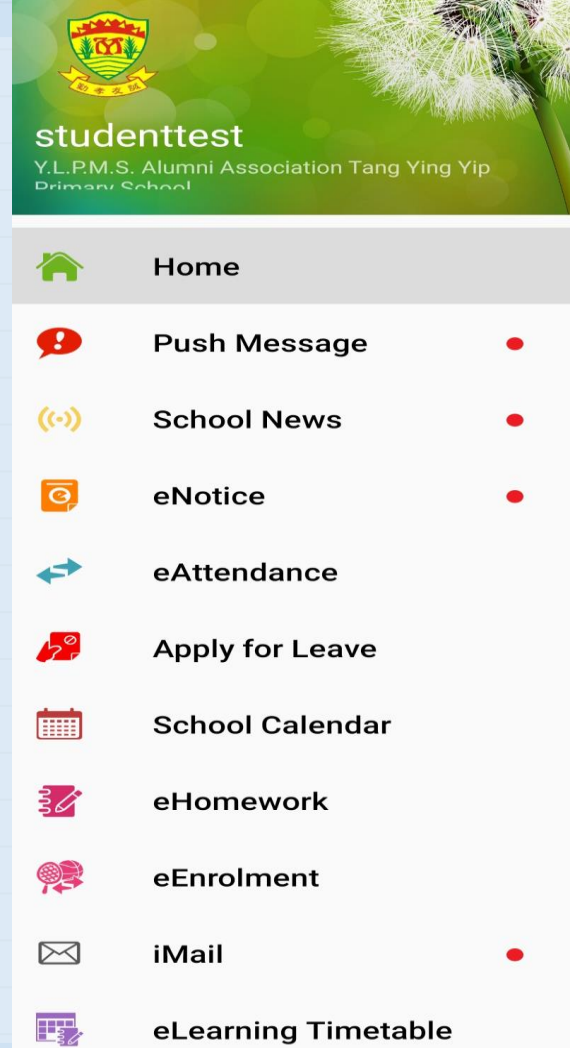




eClass
Parent App

E-CLASS

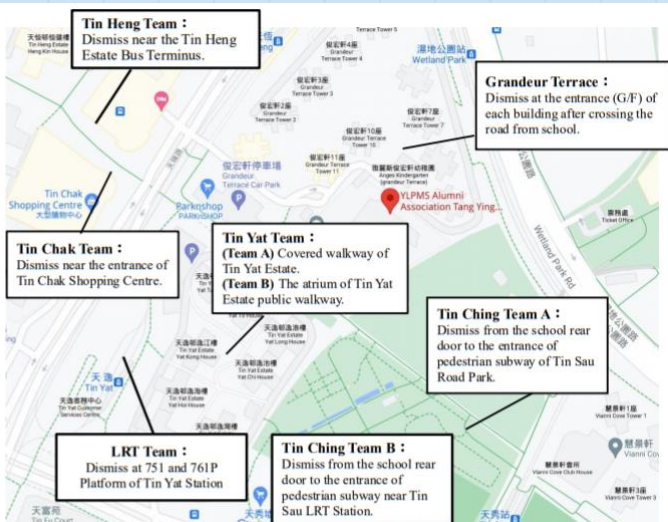
You can read the
news and **notices** of
our school



(VI) POINTS-TO-NOTE

2. Home-Returning Methods

- Refer to the notice (no.2021215)
- Strongly recommend parents come to pick up students
- Please read the map & descriptions carefully



- Taking a nanny van** Registration Mark: () Contact of Company of Nanny Van: ()
- Taking a school bus** (Please contact General Office for enquiries.)
- Picking up by parents**
- Outside Hong Kong (Mainland)** Parents are required to discuss with school about the school return and home return arrangements of students.
- Students leave school on their own** (Students of each home returning team will be led by teachers to specific dismissal locations, please visit our school website for photos of dismissal locations.)
- Grandeur Terrace Team:** Teachers lead students from school to the entrance of each building. My child lives in Block: ()
- Tin Chak Team:** Teachers lead students from school and dismiss near the entrance of Tin Chak Shopping Centre after walking through the pedestrian subway.
- Tin Heng Team:** Teachers lead students from school and dismiss near the entrance of Tin Chak Shopping Centre after walking through the pedestrian subway (near Tin Heng Estate Bus Terminus).
- Tin Yat Team:** Teachers lead students from school and dismiss at covered walkway of Tin Yat Estate.
- Tin Ching Team A:** Teachers lead students from school and dismiss at the entrance of pedestrian subway of Tin Sau Road Park. (Parents can pick up children at the entrance of pedestrian subway.)
- Tin Ching Team B:** Teachers lead students from school and dismiss at the entrance of pedestrian subway near Tin Sau LRT Station. (Parents can pick up children at the entrance of pedestrian subway.)
- LRT Team:** Teachers lead students from school and dismiss at Tin Yat LRT Station by walking through Tin Yat Estate.



The first school day of new academic year is scheduled on 1 September (Wednesday). In order to have a better home return team arrangement for students, please indicate student's home-returning method of coming academic year (2021-2022). For safety reason, once the home returning arrangement has been made, it cannot be changed at will. If it is necessary to have a change of home-returning method, parents should come to school for proceeding relevant procedures or inform school by writing down the new arrangement on "Message from Parent to the School" of the school handbook for rearrangement. Please return the reply slip below and return it to General Office (G/F) on or before 27 July (Tuesday).

When completing the reply slip, parent should note that:
 (1) If you choose nanny van service, please contact the driver directly for boarding venue, alighting venue, arrival time and fare. Our school will only be responsible for allocating car number to nanny vans and monitoring the safety issues of students when they are leaving school. *(If parent is not satisfied with the nanny van service, please contact the company of the nanny van service directly.)
 (2) Under the current policy, students who need to go to school in other district can apply Cross-net Travel Subsidy Scheme of the government.

Kind regards,
 Yuen Long Public Middle School Alumni Association
 Tang Ying Yip Primary School



Reply Slip of
 2021-2022 Survey on Home Return Team
 (New Primary One Students and Transfer Students) Circular no: 2021215

Dear Sir/ Madam,
 I have read and understood the notice, now I decide the home returning method of my child in 2021-2022 is:

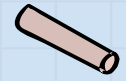
- Taking a nanny van** Registration Mark: () Contact of Company of Nanny Van: ()
- Taking a school bus** (Please contact General Office for enquiries.)
- Picking up by parents**
- Outside Hong Kong (Mainland)** Parents are required to discuss with school about the school return and home return arrangements of students.
- Students leave school on their own** (Students of each home returning team will be led by teachers to specific dismissal locations, please visit our school website for photos of dismissal locations.)
- Grandeur Terrace Team:** Teachers lead students from school to the entrance of each building. My child lives in Block: ()
- Tin Chak Team:** Teachers lead students from school and dismiss near the entrance of Tin Chak Shopping Centre after walking through the pedestrian subway.

Tin Heng Team: Teachers lead students from school and dismiss near the entrance of Tin Chak Shopping Centre after walking through the pedestrian subway (near Tin Heng Estate Bus Terminus).
Tin Yat Team: Teachers lead students from school and dismiss at covered walkway of Tin Yat Estate.
Tin Ching Team A: Teachers lead students from school and dismiss at the entrance of pedestrian subway of Tin Sau Road Park. (Parents can pick up children at the entrance of pedestrian subway.)
Tin Ching Team B: Teachers lead students from school and dismiss at the entrance of pedestrian subway near Tin Sau LRT Station. (Parents can pick up children at the entrance of pedestrian subway.)

My child lives in Block: ()
 My child is attending in our school (if any):

Signature of Parent : ()
 Name of Student : ()

Admitted in 20-21 Academic Year : () and Name of Student : ()
 *Please complete the reply slip and return it to General Office on or before 27 July.

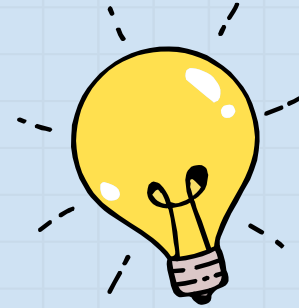


(VI) POINTS-TO-NOTE

3. Tips for Parents

During adaptation:

- Help to check handbook & assignments of students
→ Encourage student to do corrections on his/her own
- Write down student's name on his/her books & stationery
- Teach & train student to pack schoolbag according to timetable
- Prepare a zipper bag for homework collection/submission
- Prepare a bag for drink & food



CONCLUSION

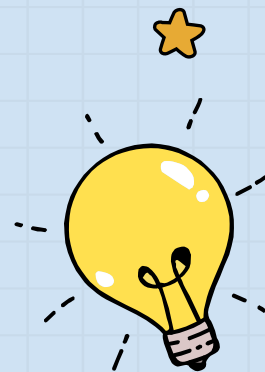
Supports of our school:

Learning

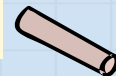
Communication

Cultural
Integration

1. Enhance students' **ability of Chinese** *Reading, Writing, Speaking & Listening*
→ better preparation for studying in the **mainstream**
2. Facilitate the **communication** between *school, parents and teachers*
→ **most updated** news and information from school
3. Provide **opportunities** for learning Chinese culture by *experience*
→ **inclusive** campus for NCS students



☺ Encourage to learn beyond CLASSROOM
↑ Confidence & ↑ Interest in Chinese



THE END

